

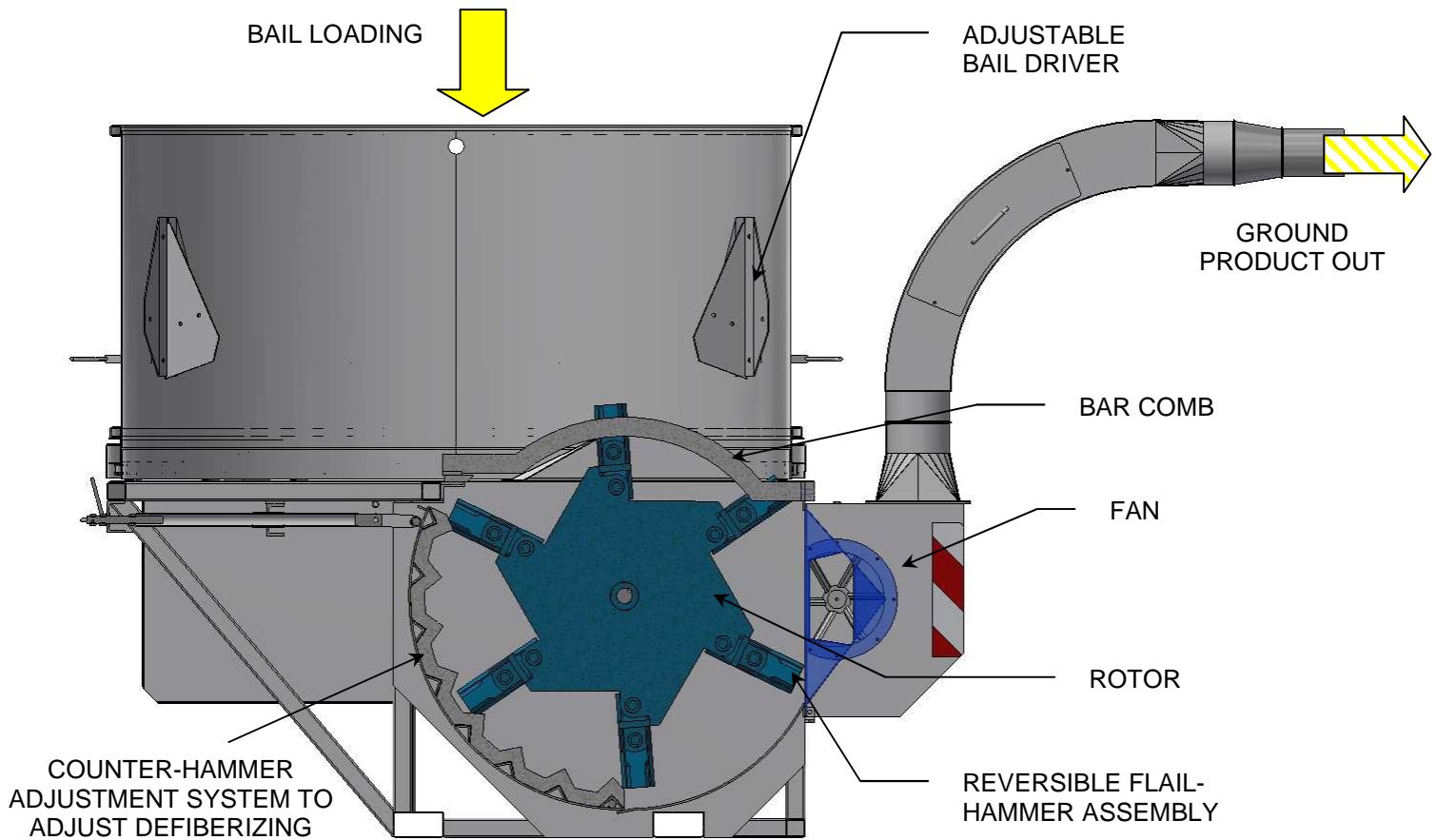
## **BALE CHOPPER DEFIBERIZER BHD 2500 SP"S"**

**IDEAL  
FOR YOUR BEDDING**



**FOR BEDDING IN LIVESTOCK SHEDS  
(POULTRY AND PALMIPEDS)**

## OPERATING PRINCIPLE

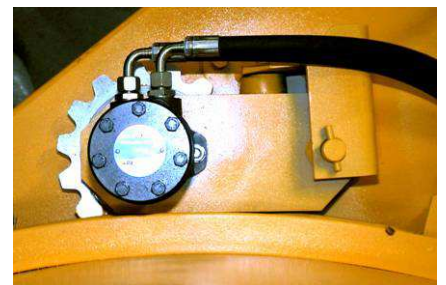


## ROTATING BAIL ASSEMBLY



LIFTING SHOE ACTUATED BY HYDRAULIC CYLINDER PREVENTS JAMMING AND FACILITATES STARTING

BAR COMB



HYDRAULIC MOTOR FOR DRIVING THE BAIL



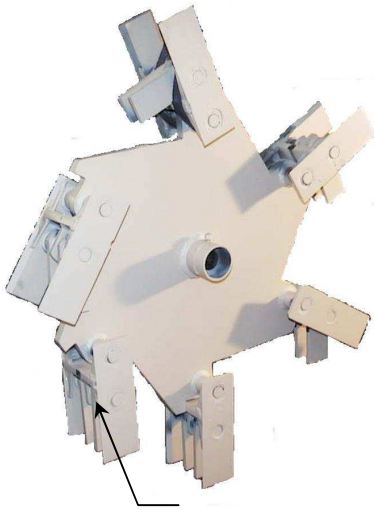
ELECTRO-HYDRAULIC CONTROL UNIT FOR ROTATING THE BAIL AND LIFTING SHOE

DIRECTION OF ROTATION REVERSER FOR COILING THE HOSE





## ROTOR ASSEMBLY



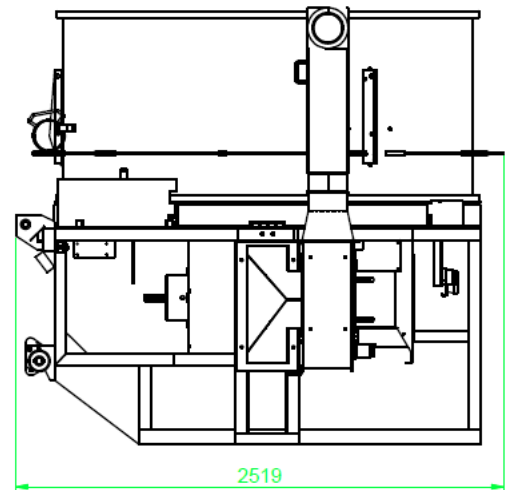
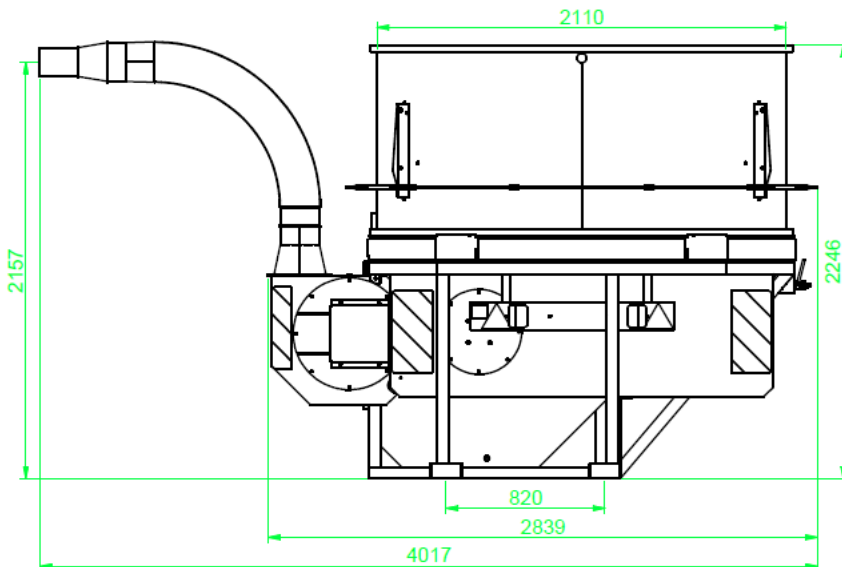
THE ROTOR BEING MACHINED INTO SOLID METAL WEIGHING 150 KG AND STARTED AT 1000 RPM MEANS ITS INERTIA ALLOWS THE USE OF MEDIUM POWERS AND AVOIDS JOLTS AND MOTOR OVERLOADS.

- NEITHER THE KNIVES NOR BLADES ARE FRIGHTENED BY BOLTS OR STONES.
- NO SHARPENING, SO NO CHANGES TO FLOW RATE OR QUALITY OF WORK.
- NO BELT SO NO SLIPPAGE
- NO STEP-UP GEAR SO NO MAINTENANCE OR RISK OF BREAKAGE

REVERSIBLE  
ARTICULATED FLAIL-  
HAMMERS THICKNESS 12



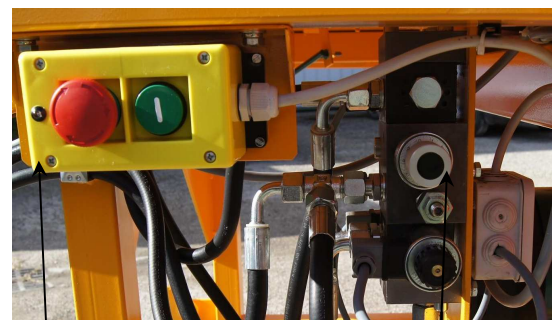
## OVERALL DIMENSIONS



## OPTIONS



REMOVABLE CONICAL HEIGHT ADJUSTER DIA. 3 M  
FOR LOADING CUBIC BALES  
(OBLONG ON REQUEST)



REMOTE CONTROL  
RECEIVER UNIT

HYDRAULIC  
CONTROL VALVE

## SPECIFICATIONS

<b>CONSTRUCTION</b>	All-welded steel, carried on 3-point hitch (size of link pin: category 3)
<b>POWER CONSUMPTION</b>	100 hp min
<b>DRIVE</b>	<ul style="list-style-type: none"> <li>• Tractor PTO 1000 rpm direct</li> <li>• Cardan joint with friction torque limiter and free-wheel</li> </ul>
<b>DELIVERY</b>	<ul style="list-style-type: none"> <li>• By fan with sharpened blades and long radius elbow</li> <li>• Ejection distance: 30 metres (with flexible hose)</li> </ul>
<b>HAMMERS</b>	6 flails and 12 hammers, reversible and articulated
<b>EQUIPMENT</b>	Electro-hydraulic control: <ul style="list-style-type: none"> <li>• actuating the cylinder of the lifting shoe. (raise and lower)</li> <li>• actuating the rotation of the bail</li> </ul> Hydraulic control: speed of rotation of the bail
<b>OPTIONS</b>	<ul style="list-style-type: none"> <li>• Removable conical height adjuster</li> <li>• Flexible hose dia. 160, length 25m with retaining handle</li> <li>• BAUER union for uncoupling</li> <li>• Remote control for rotating the bail remotely (25 m)</li> <li>• Digital time counter</li> </ul>
<b>WEIGHT</b>	1400 kg

**DEVICE NOT RECOMMENDED FOR USE ON THE PUBLIC HIGHWAY**

## PERFORMANCE

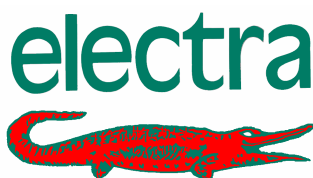
**10 round bales/hour (without hose)**

**6 cubic bales/hour (without hose)**

**4 cubic bales/hour (with hose)**

\*Complete defiberizing of the straw bails allows droppings and excrement to be absorbed and saves on bedding relaying operations

## SAMPLE



**47170 POUDENAS - FRANCE**

**Tel.: +33 (0)5 53 65 73 55**

**Fax: +33 (0)5 53 97 33 05**

**e-mail: [elevage@electra.fr](mailto:elevage@electra.fr)**

**Internet: [www.electra.fr](http://www.electra.fr)**